



**REXWAY**

# **ALUMINIUM CONDUIT AND FITTINGS**

**for cable management**

**conduit . coupling . elbow . nipple**

### Rigid Aluminium Conduit (RAC)

Material : 6063 Aluminium alloy in temper designation T1

Standard : UL6A, ANSI C80.5



Manufactured in accordance with ANSI C80.5, it is 1/3 the weight of your regular rigid steel conduit. It will be easier to handle and transport which leads to lower labor cost. Appearance wise, aluminium conduit has better outer appearance compared to rigid metal conduit.

Item Code	Trade Size		Nominal Outside		Nominal Wall Thickness		Approx. Wt. Per 100FT. (30.5M)	
	US	Metric	in.	mm	in.	mm	lb.	kg
C-A050	1/2	16	0.840	21.3	0.104	2.6	28.1	12.7
C-A075	3/4	21	1.050	26.7	0.107	2.7	37.4	17.0
C-A100	1	27	1.315	33.4	0.126	3.2	54.5	24.7
C-A125	1-1/4	35	1.660	42.2	0.133	3.4	71.6	32.5
C-A150	1-1/2	41	1.900	48.3	0.138	3.5	88.7	40.2
C-A200	2	53	2.375	60.3	0.146	3.7	118.5	53.8
C-A250	2-1/2	63	2.875	73.0	0.193	4.9	187.5	85.0
C-A300	3	78	3.500	88.9	0.205	5.2	246.3	111.7
C-A350	3-1/2	91	4.000	101.6	0.215	5.5	295.6	134.1
C-A400	4	103	4.500	114.3	0.225	5.7	350.2	155.8
C-A500	5	129	5.563	141.3	0.245	6.2	478.9	217.2
C-A600	6	155	6.625	168.3	0.266	6.8	630.4	285.9

### Rigid Aluminium Coupling

Standard : UL6A, ANSI C80.5

Item Code	Size
AC-050	1/2"
AC-075	3/4"
AC-100	1"
AC-125	1-1/4"
AC-150	1-1/2"
AC-200	2"
AC-250	2-1/2"
AC-300	3"
AC-350	3-1/2"
AC-400	4"
AC-500	5"
AC-600	6"



### Rigid 90° Standard Aluminium Elbow

Standard : UL6A, ANSI C80.5

Available In : 90°, 60°, 45°, 30° and 22.5° bends

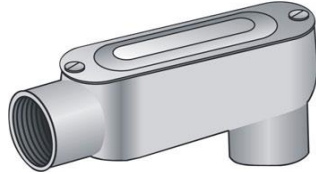
Item Code	Size
AE90-050	1/2"
AE90-075	3/4"
AE90-100	1"
AE90-125	1-1/4"
AE90-150	1-1/2"
AE90-200	2"
AE90-250	2-1/2"
AE90-300	3"
AE90-350	3-1/2"
AE90-400	4"
AE90-500	5"
AE90-600	6"



## Aluminium Conduit Body

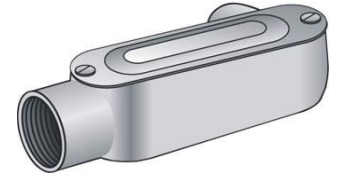
### Type LB

Item Code	Size
AB7B-050	1/2"
AB7B-075	3/4"
AB7B-100	1"
AB7B-125	1-1/4"
AB7B-150	1-1/2"
AB7B-200	2"
AB7B-250	2-1/2"
AB7B-300	3"
AB7B-350	3-1/2"
AB7B-400	4"



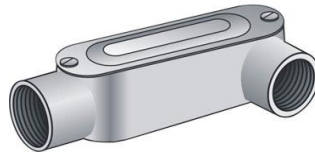
### Type LL

Item Code	Size
AB7L-050	1/2"
AB7L-075	3/4"
AB7L-100	1"
AB7L-125	1-1/4"
AB7L-150	1-1/2"
AB7L-200	2"
AB7L-250	2-1/2"
AB7L-300	3"
AB7L-350	3-1/2"
AB7L-400	4"



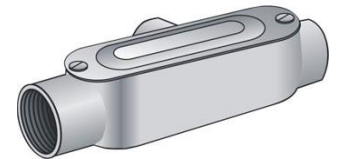
### Type LR

Item Code	Size
AB7R-050	1/2"
AB7R-075	3/4"
AB7R-100	1"
AB7R-125	1-1/4"
AB7R-150	1-1/2"
AB7R-200	2"
AB7R-250	2-1/2"
AB7R-300	3"
AB7R-350	3-1/2"
AB7R-400	4"



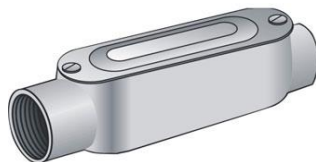
### Type T

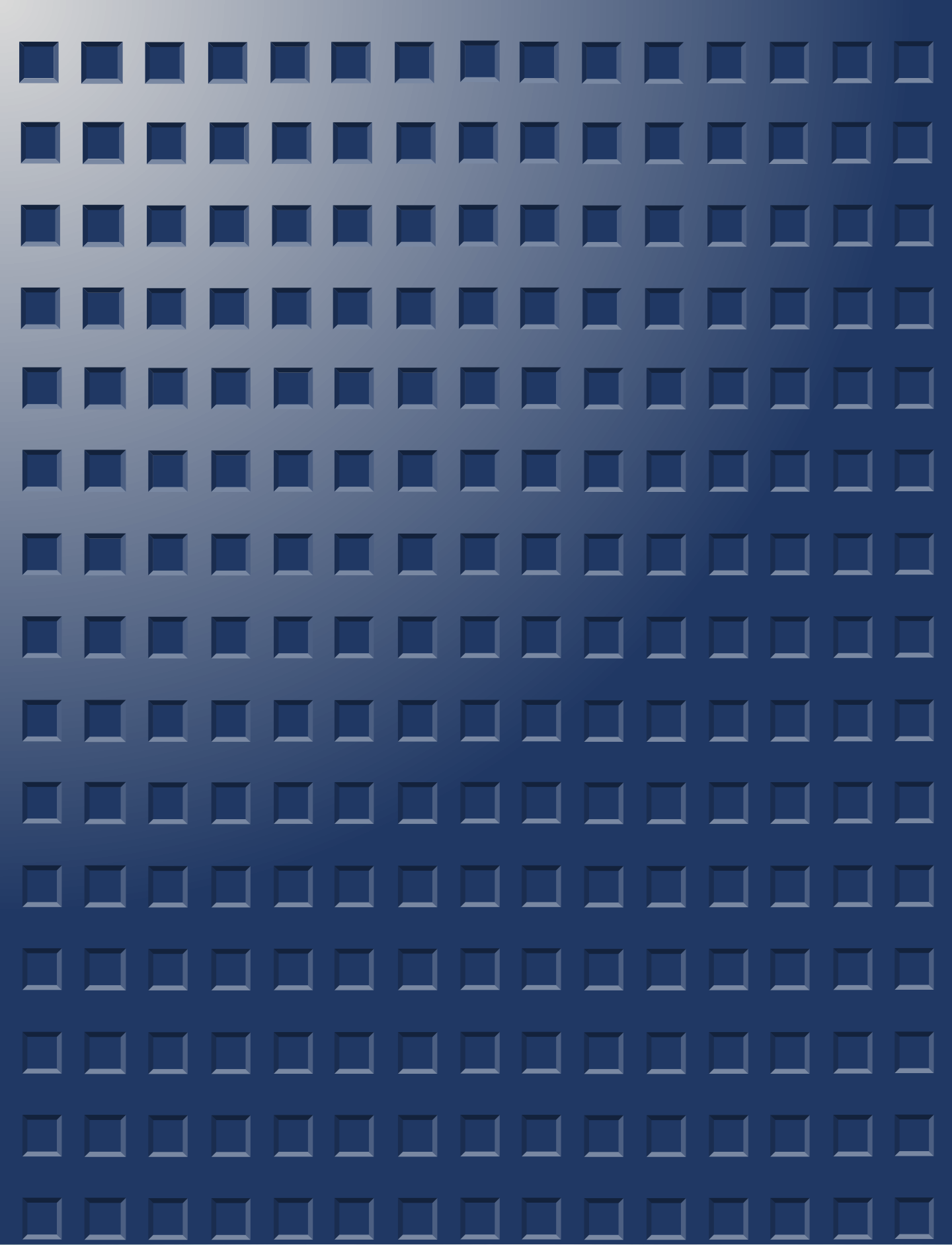
Item Code	Size
AB7T-050	1/2"
AB7T-075	3/4"
AB7T-100	1"
AB7T-125	1-1/4"
AB7T-150	1-1/2"
AB7T-200	2"
AB7T-250	2-1/2"
AB7T-300	3"
AB7T-350	3-1/2"
AB7T-400	4"



### Type C

Item Code	Size
AB7C-050	1/2"
AB7C-075	3/4"
AB7C-100	1"
AB7C-125	1-1/4"
AB7C-150	1-1/2"
AB7C-200	2"
AB7C-250	2-1/2"
AB7C-300	3"
AB7C-350	3-1/2"
AB7C-400	4"





**Insteel (Malaysia) Sdn Bhd** (469850-M)  
Lot 2-31, Jalan SU 7, Sekyen 26, Off Persiaran Tengku Ampuan, 40400 Shah Alam, Selangor Darul Ehsan, Malaysia.  
Tel: +603-5192 8003 Fax: +603-5192 1023

[www.insteelworld.com](http://www.insteelworld.com) E-mail: [info@insteelworld.com](mailto:info@insteelworld.com)